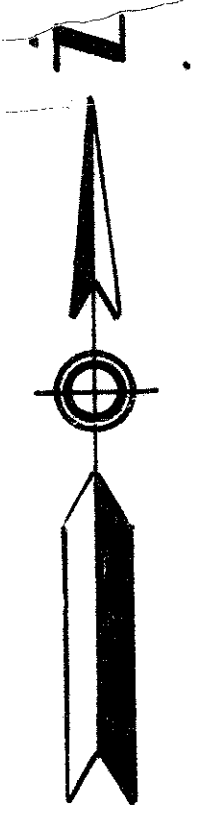


SOUTH SHORE NO. 1 OF WELLINGTON

IN PART OF SECTIONS 10 & 11, TWP. 44 S., RGE. 41 E.
PALM BEACH COUNTY, FLORIDA
IN 5 SHEETS SHEET NO. 4



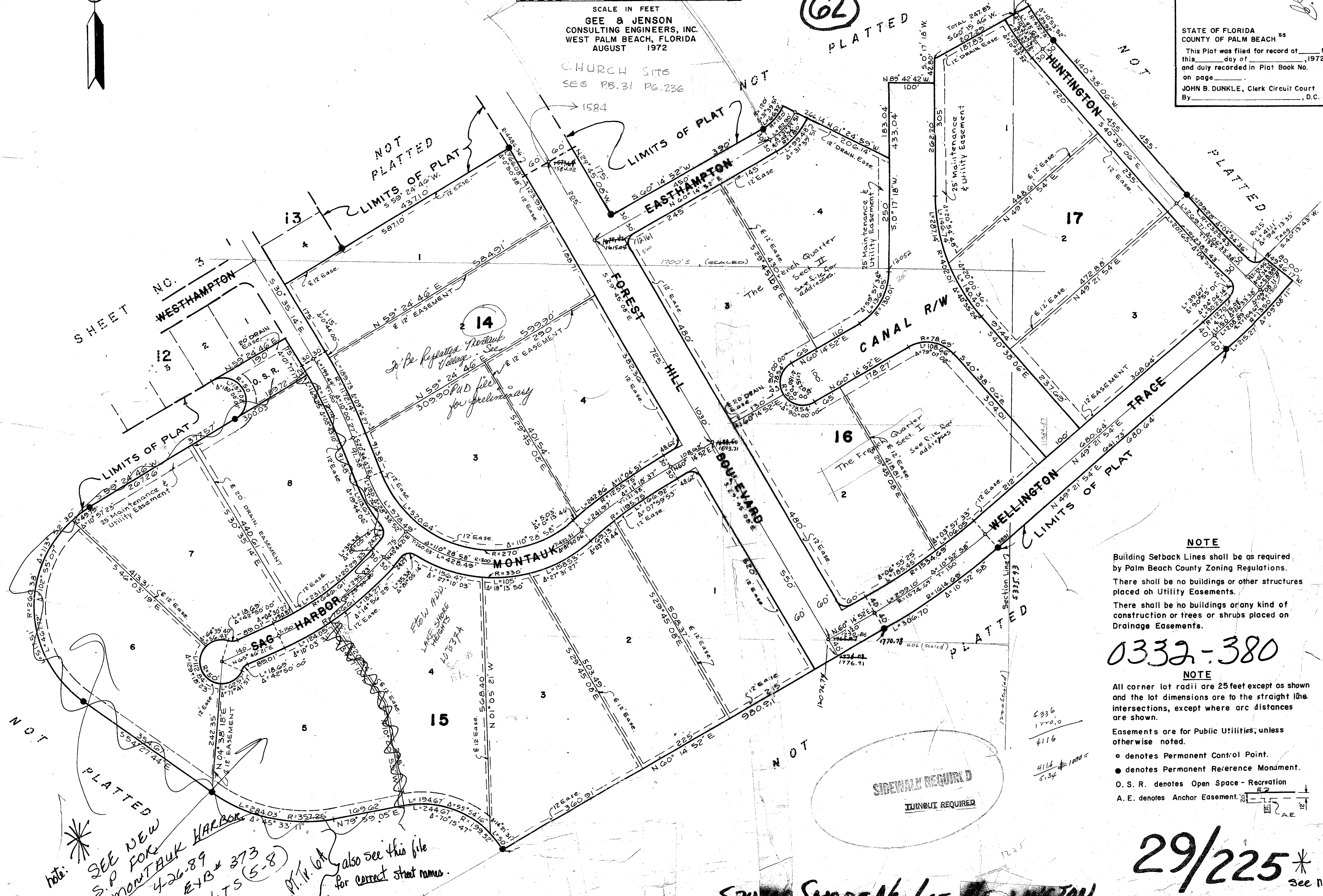
SCALE IN FEET
GEE & JENSON
CONSULTING ENGINEERS, INC.
WEST PALM BEACH, FLORIDA
AUGUST 1972



62 PLATTED

CHURCH SITE
SEE PB. 31 PG. 236

STATE OF FLORIDA
COUNTY OF PALM BEACH
This Plat was filed for record at _____ M.
this _____ day of _____, 1972,
and duly recorded in Plat Book No. _____
on page _____
JOHN B. DUNKLE, Clerk Circuit Court
By _____, D.C.



NOTE
Building Setback Lines shall be as required by Palm Beach County Zoning Regulations.
There shall be no buildings or other structures placed on Utility Easements.
There shall be no buildings or any kind of construction or trees or shrubs placed on Drainage Easements.

0332-380

NOTE
All corner lot radii are 25 feet except as shown and the lot dimensions are to the straight line intersections, except where arc distances are shown.

Easements are for Public Utilities, unless otherwise noted.
• denotes Permanent Control Point.
● denotes Permanent Reference Monument.
O. S. R. denotes Open Space - Recreation
A. E. denotes Anchor Easement

SIDEWALK REQUIRED
TURNOUT REQUIRED

note: SEE NEW S.P. FOR MONTAUK HARBOR 4-26-89 E-1B & 373 LOTS (5-8) Pt. W. lot also see this file for correct street names.

SOUTH SHORE NO. 1 OF WELLINGTON

29/225 * see note